

LAN/WAN Network Monitoring Tool Screens

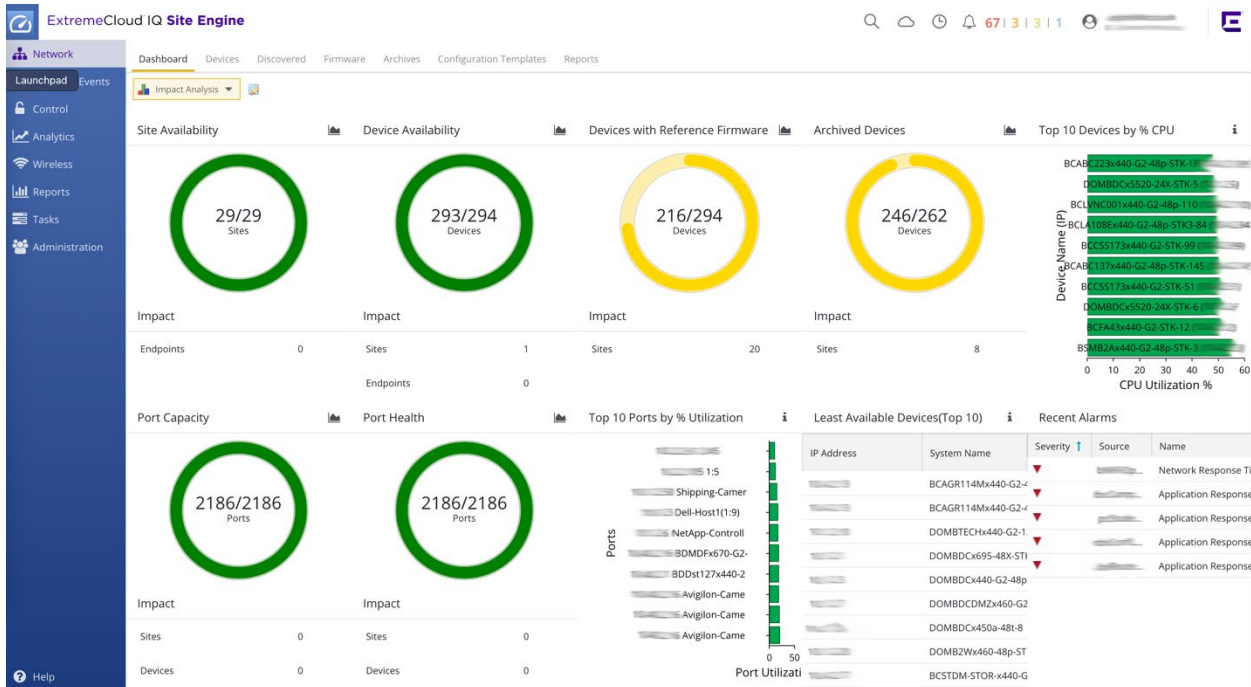
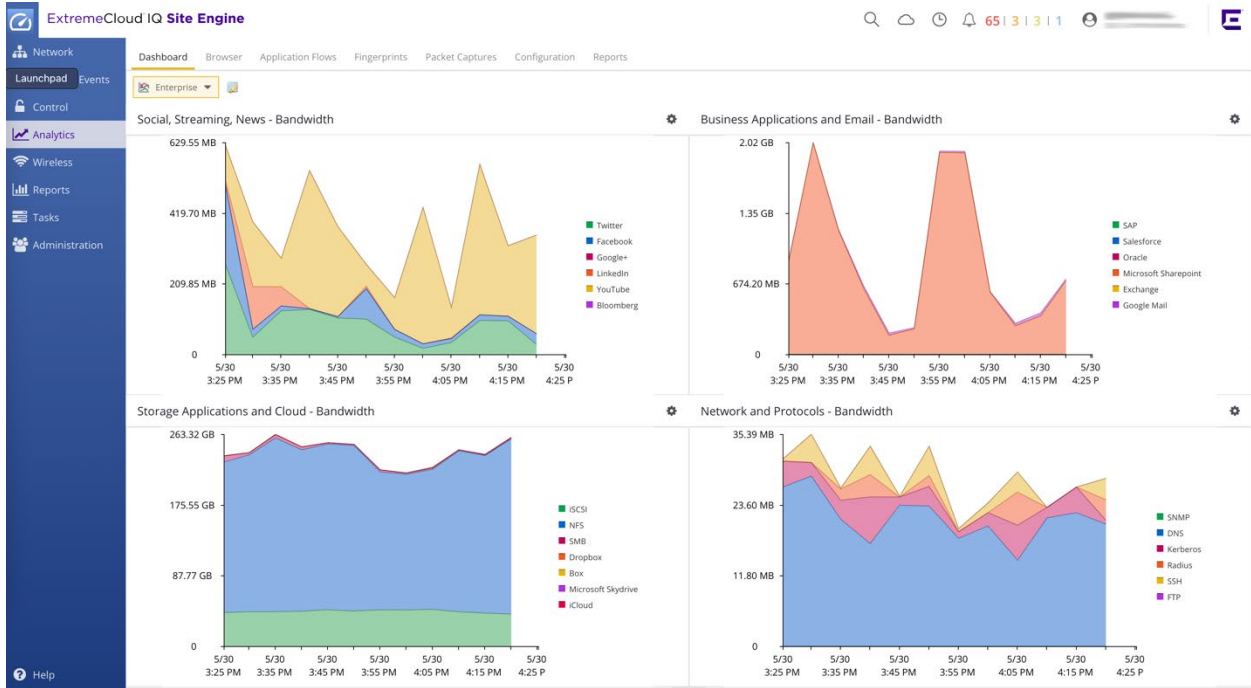
Network Monitoring Tools

Some sensitive information has been blurred for security purposes.

Screenshots of LAN Monitoring Interfaces

The screenshot displays the 'ExtremeCloud IQ Site Engine' interface. The left sidebar contains navigation options: Alerts & Events, Control, Analytics, Wireless, Reports, Tasks, and Administration. The main content area is titled 'Devices' and shows a list of network devices. The table columns include: Status, Name, IP Address, Device Type, Firmware, Reference, Site, Poll Status, Poll Details, Family, Connector, IQ Onboarded, and License. The table lists various devices such as 'CMBE1A40-02-48x1', 'CMBE1A40-48p-5', and 'CMBE1A40-48P-9', along with their respective IP addresses, device types (e.g., 'X840-48p', 'S420F-24P-40E-EXOS'), and firmware versions. The interface also includes a search bar and a 'Page 1 of 1' indicator at the bottom.

The screenshot displays the 'ExtremeCloud IQ Site Engine' interface, specifically the 'Network Service' dashboard. The top navigation bar includes 'Dashboard', 'Browser', 'Application Flows', 'Fingerprints', 'Packet Captures', 'Configuration', and 'Reports'. The main content area is titled 'Network Service' and shows a 'Top: 25' filter and a 'Last Week' time range. The dashboard is divided into five columns, each representing a different network protocol: DHCP, DNS, Kerberos, LDAP, and RADIUS. Each column contains a series of performance metrics, including response times and error rates, displayed as bar charts and line graphs. The metrics are color-coded (red for high values, green for low values) and include numerical values such as '853s', '65ms', '15s', '190s', and '540s'. The interface also includes a search bar and a 'Views' dropdown menu at the top right.



Screenshots of WAN Monitoring Interfaces

