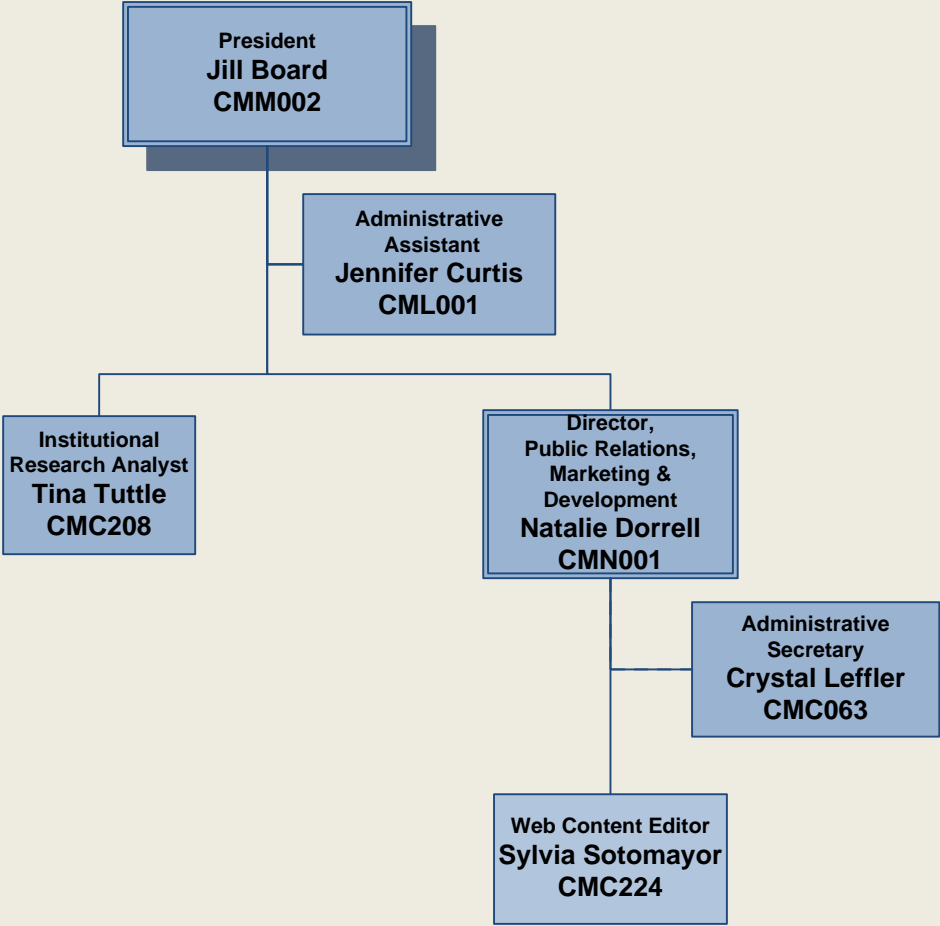


Cerro Coso Community College
President's Office
Organizational Chart
2012-2013
Updated July 19, 2012



Cerro Coso Community College
Management Team
Organizational Chart
 2012-2013
 Updated July 19, 2012

President
Jill Board
CMM002

College
Human Resources
Manager
Clint Dougherty
DMN024

Vice President,
Student Services
Heather Ostash
CMM003

Director,
Administrative
Services
Gale Lebsock
CMN008

Contract &
Community Ed
Accounts Manager
Vacant
CMN018

Vice President,
Academic Affairs
Corey Marvin
CMM011

Director,
Public Relations,
Marketing &
Development
Natalie Dorrell
CMN001

Manager, Information
Technology
Mike Campbell
CMN017

Director,
Child Development Center
Jennifer San
Nicholas
CMN011

Director,
Admissions & Records
Vacant
CMN009

Accounting
Manager
Lisa Couch
DMN028

Manager,
Maintenance &
Operations
John Daly
CMN002

Director,
Eastern Sierra College
Center
Bishop/Mammoth
Deanna Campbell
CEM002

CDC Site Supervisor-
IWV
Diana Smith
CMN013

Director,
Financial Aid &
Scholarships I
Vacant
CMN006

Director of Students and
Counseling Services
Paula Suarez
CMM022

CDC Site Supervisor-Cal
City
Julie Keller
CMN014

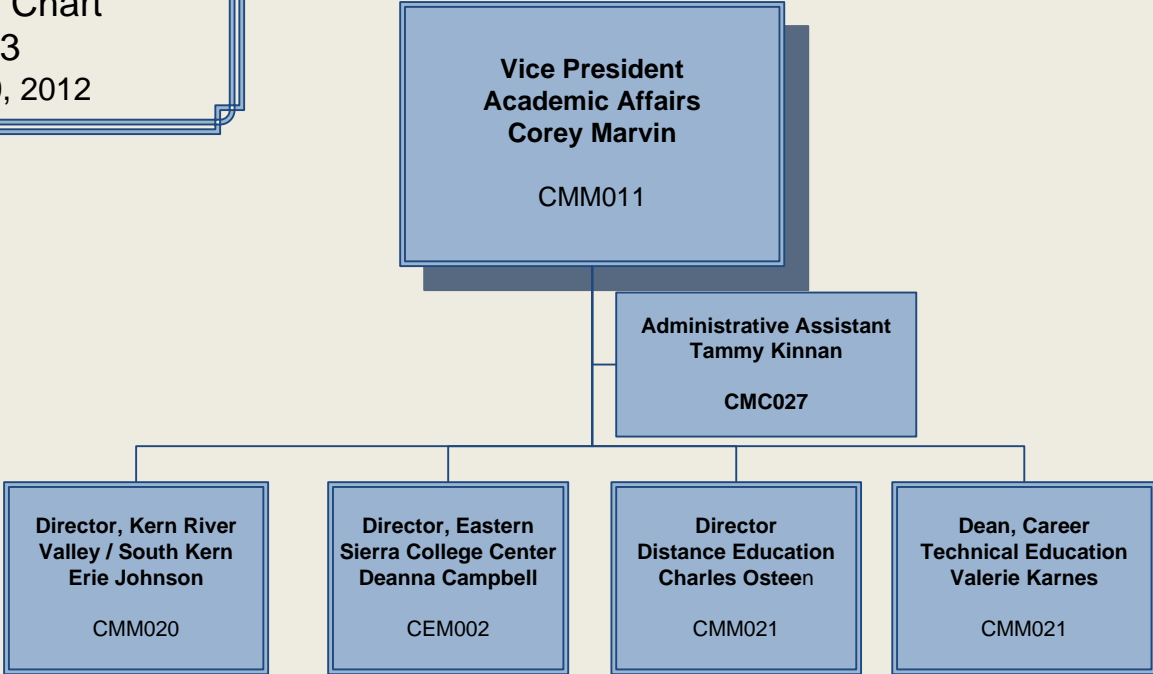
Director of Student
Programs and Athletics
Vacant
CMM023

Dean,
Career Technical
Education
Valerie Karnes
CMM006

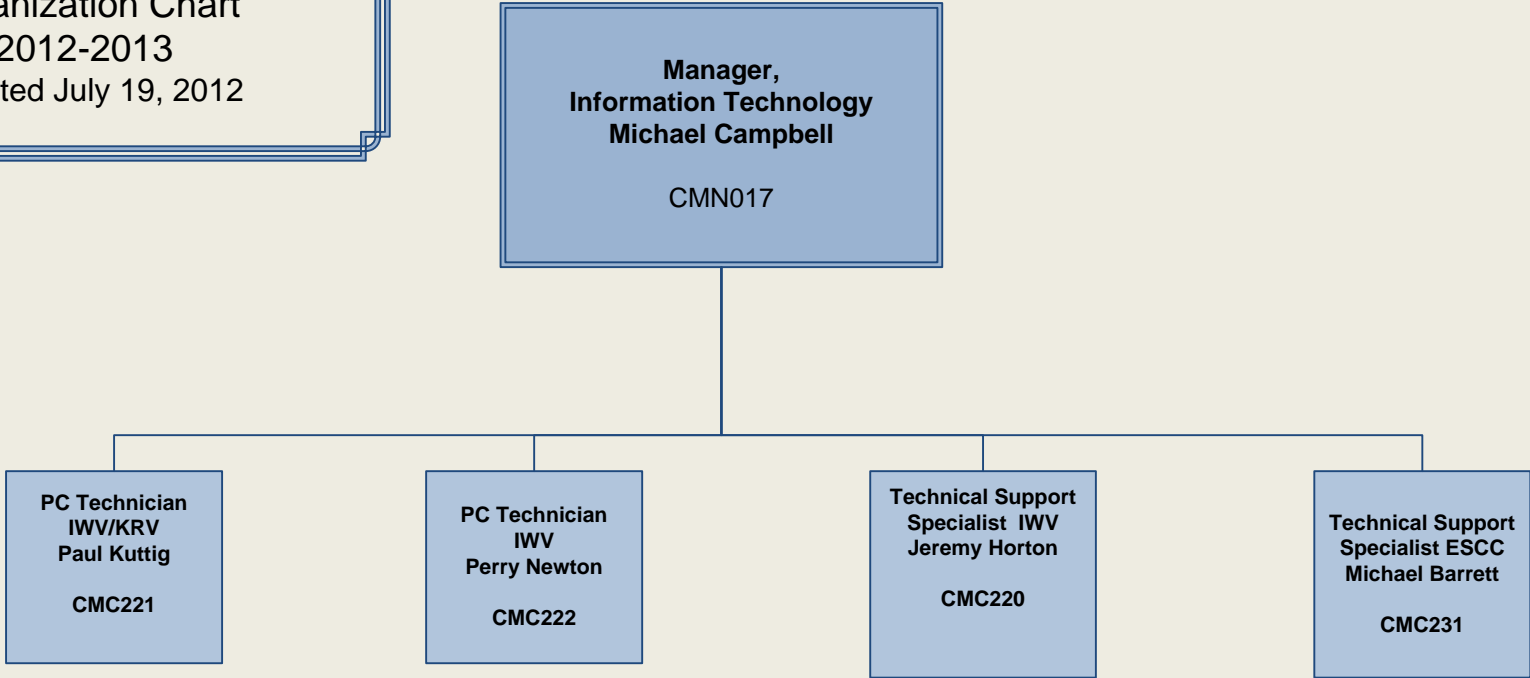
Director,
Kern River Valley/
South Kern
Erie Johnson
CMM020

Director, Distance
Education
Charles Osteen
CMM021

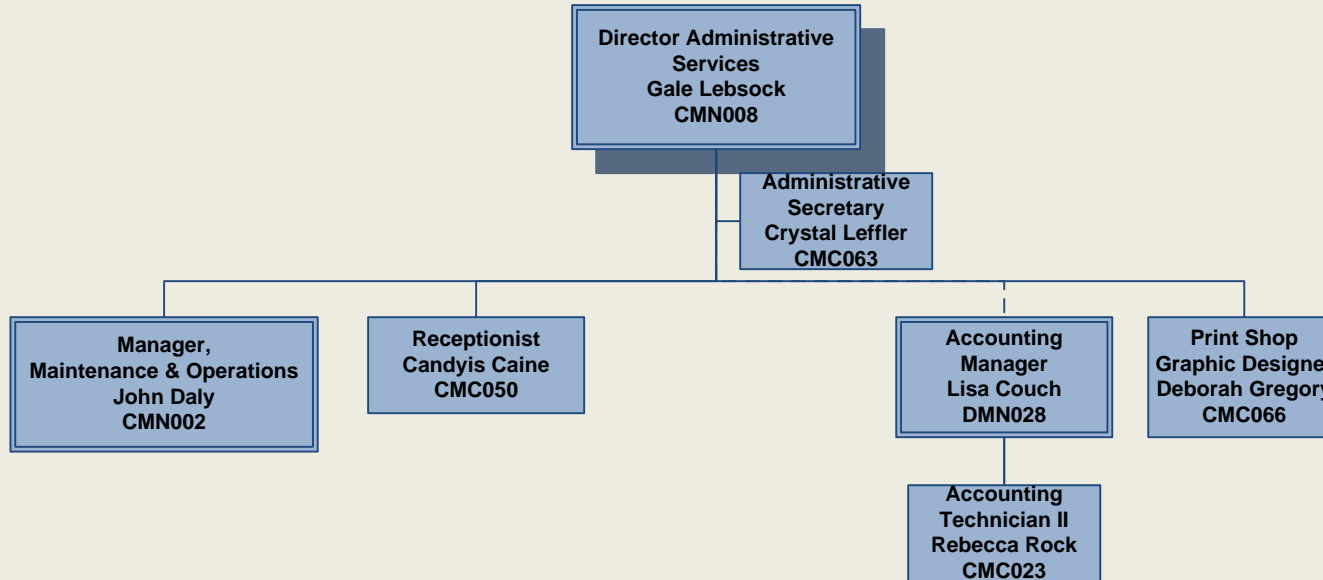
Cerro Coso Community College
Academic Affairs
Organizational Chart
2012-2013
Updated July 19, 2012



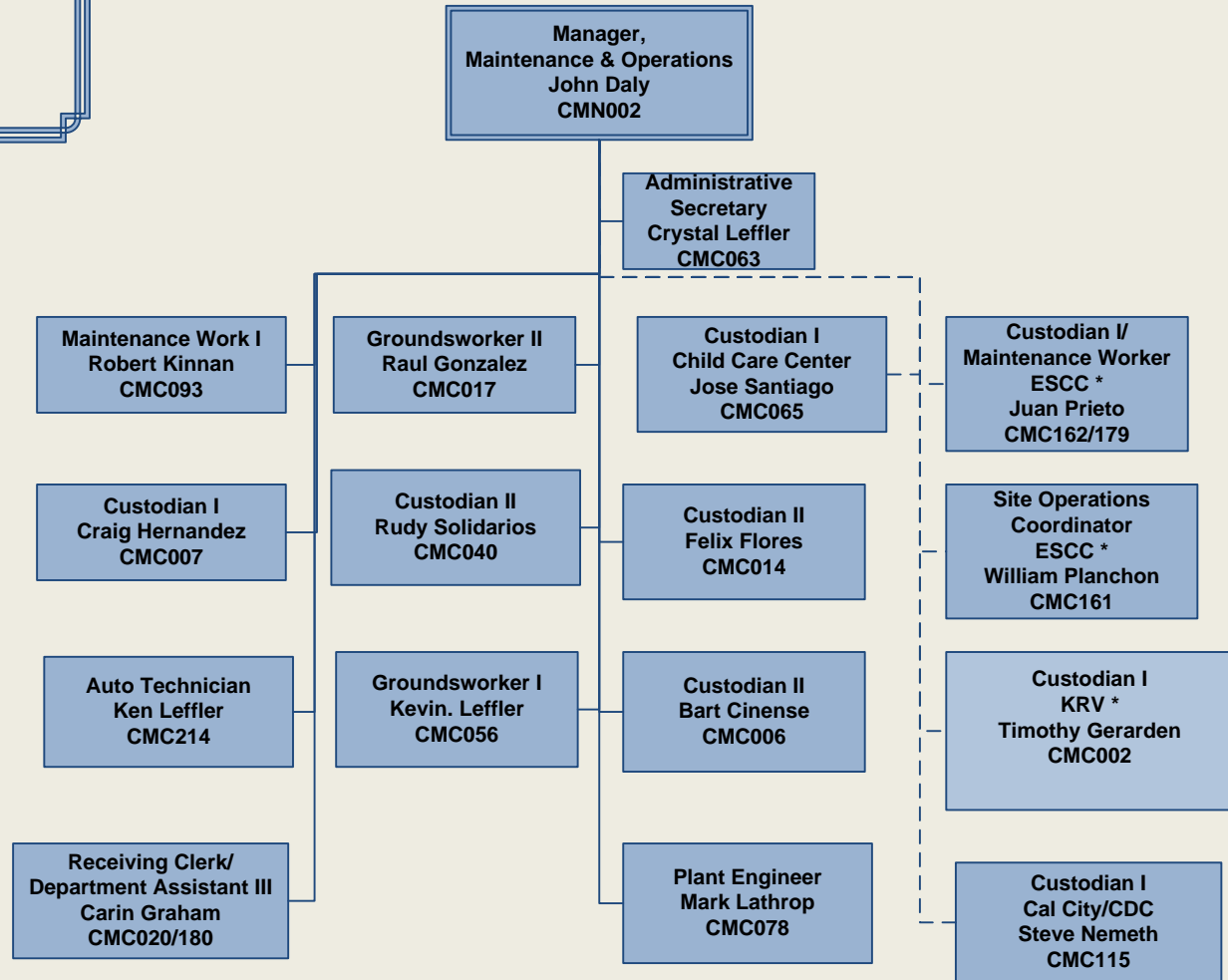
Cerro Coso Community College
Information Technology
Organization Chart
2012-2013
Updated July 19, 2012



Cerro Coso Community College
Administrative Services
Organizational Chart
2012-2013
Updated July 19, 2012



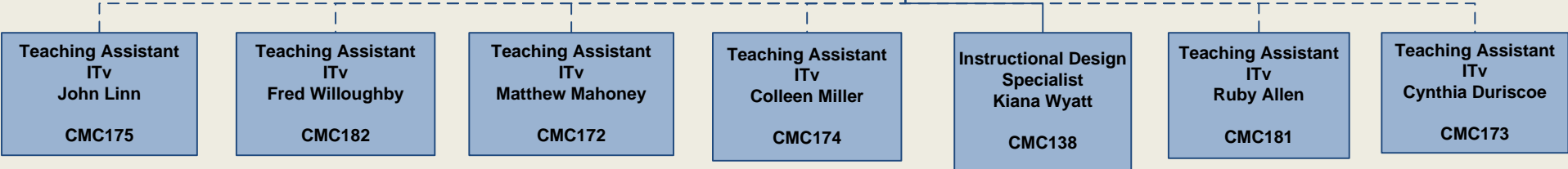
Cerro Coso Community College
Maintenance & Operations
 Organizational Chart
 2012-2013
 Updated July 19, 2012



Cerro Coso Community College
Academic Affairs
Distance Education
Organizational Chart
2012-2013
updated July 19, 2012

Director, Distance
Education
Charles Osteen

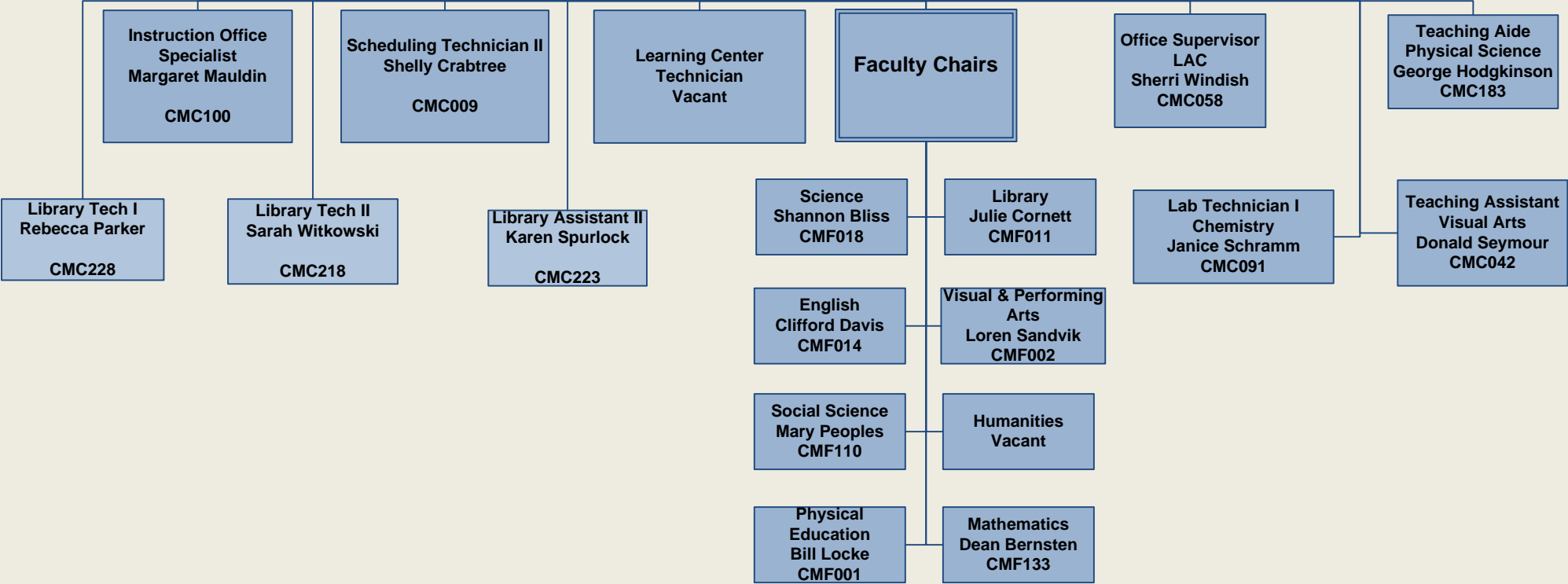
CMM021



Cerro Coso Community College
Academic Affairs
Support Staff & Faculty Chairs
 Organizational Chart
 2012-2013
 updated July 19, 2012

**Vice President
 Academic Affairs
 Corey Marvin**
CMM011

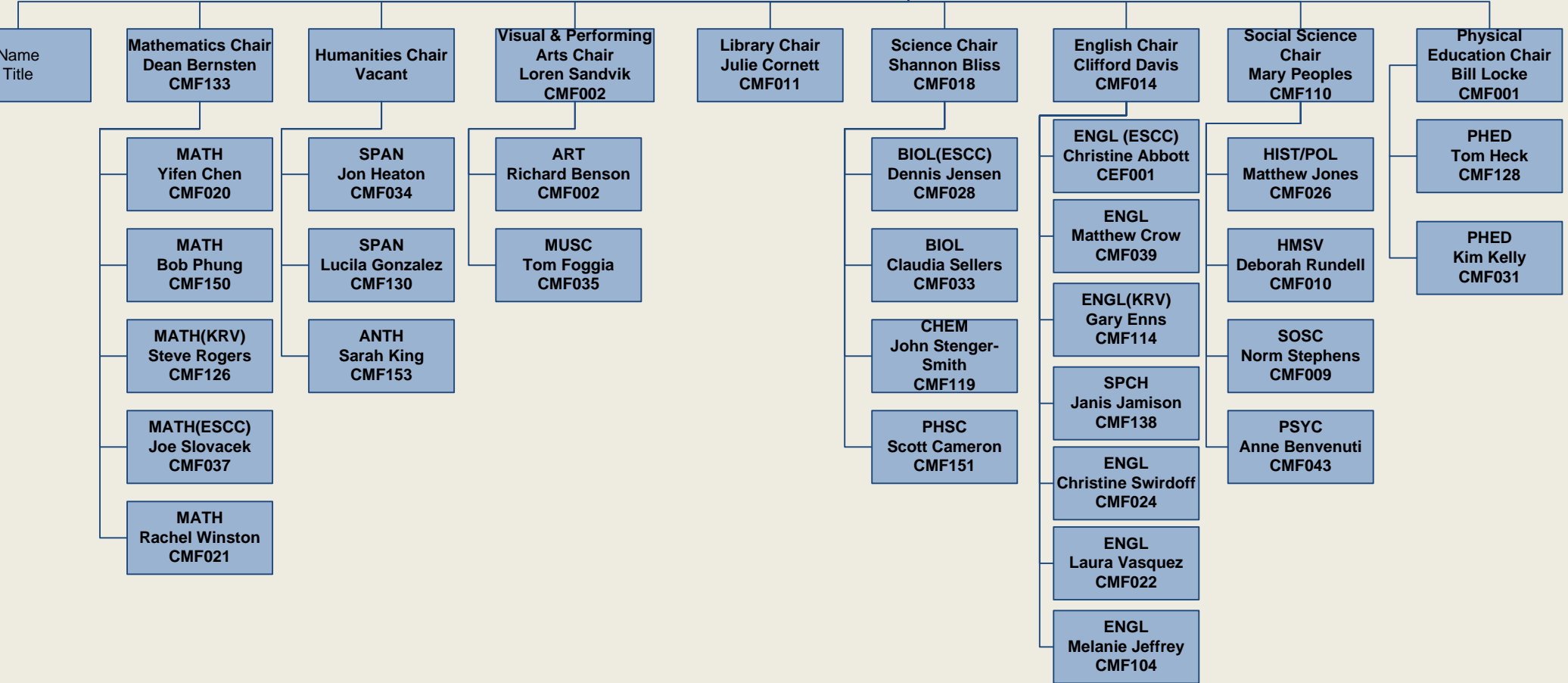
**Administrative Assistant
 Tammy Kinnan**
CMC027



Cerro Coso Community College
Academic Affairs
Liberal Arts Faculty
 Organizational Chart
 2012-2013
 updated July 19, 2012

Vice President
 Academic Affairs
 Corey Marvin

 CMM011



Cerro Coso Community College
Academic Affairs
Career Technical Education
 Organization Chart
 2012-2013
 Updated July 19, 2012

**Dean,
 Career Technical Education
 Valerie Karnes**
 CMM006

**Administrative Assistant
 Angela Sellers**
 CMC135

**Faculty Chair
 Business/CIS
 Karen O'Connor
 CMF006**

**Faculty Chair
 Child Development
 Mary O'Neal
 CMF106**

**Faculty Chair
 Industrial Arts
 James O'Connor
 CMF142**

**Faculty Chair
 Media Arts
 Lisa Darty
 CMF120**

**Faculty Chair
 Public Services
 Cheryl Gates
 CMF140**

**Business
 Frank Timpone
 CMF155**

**CSCI
 April Browne
 CMF036**

**CSCI(ESCC)
 Matthew Hightower
 CMF045**

**CHDV
 Lisa Fuller
 CMF115**

**CHDV
 Vivian Baker
 CMF154**

**Faculty
 Wind Technology
 Adnan Buxamusa
 CMF152**

**MA
 Suzanne Ama
 CMF111**

**HCRS
 Annette Hodgins
 CMF044**

**ADMJ
 Steve Busby
 CMF107**

**EMTC
 Michael Metcalf
 CMF047**

**HCRS
 Matthew Wanta
 CMF149**

Cerro Coso Community College
Academic Affairs:
Eastern Sierra College Center
Mammoth/Bishop
 Organization Chart
 2012-2013
 Updated July 19, 2012

Director,
Eastern Sierra College Center
Deanna Campbell

CEM002

Technical Support Specialists
(IT)
Michael Barrett

CMC088

Site Operations Coordinator
I (M&O)
William Planchon

CMC161

Custodian I /Maintenance
Worker - Mammoth
Juan Prieto

CMC162/179

Department Assistant II
Mammoth
Jenine Cushman

CMC225

Department Assistant II
Bishop
Deborah Martell

CEC009

Instructional Design
Specialists
Bishop
Kiana Wyatt

CMC138

Teaching Assistant
ITv
Fred T. Willoughby

CMC182

Teaching Assistant
ITv
Matthew Mahoney

CMC172

Teaching Assistant
Nursing ITv
Ruby Allen

CMC181

Teaching Assistant
Nursing ITv
Cynthia Duriscoe

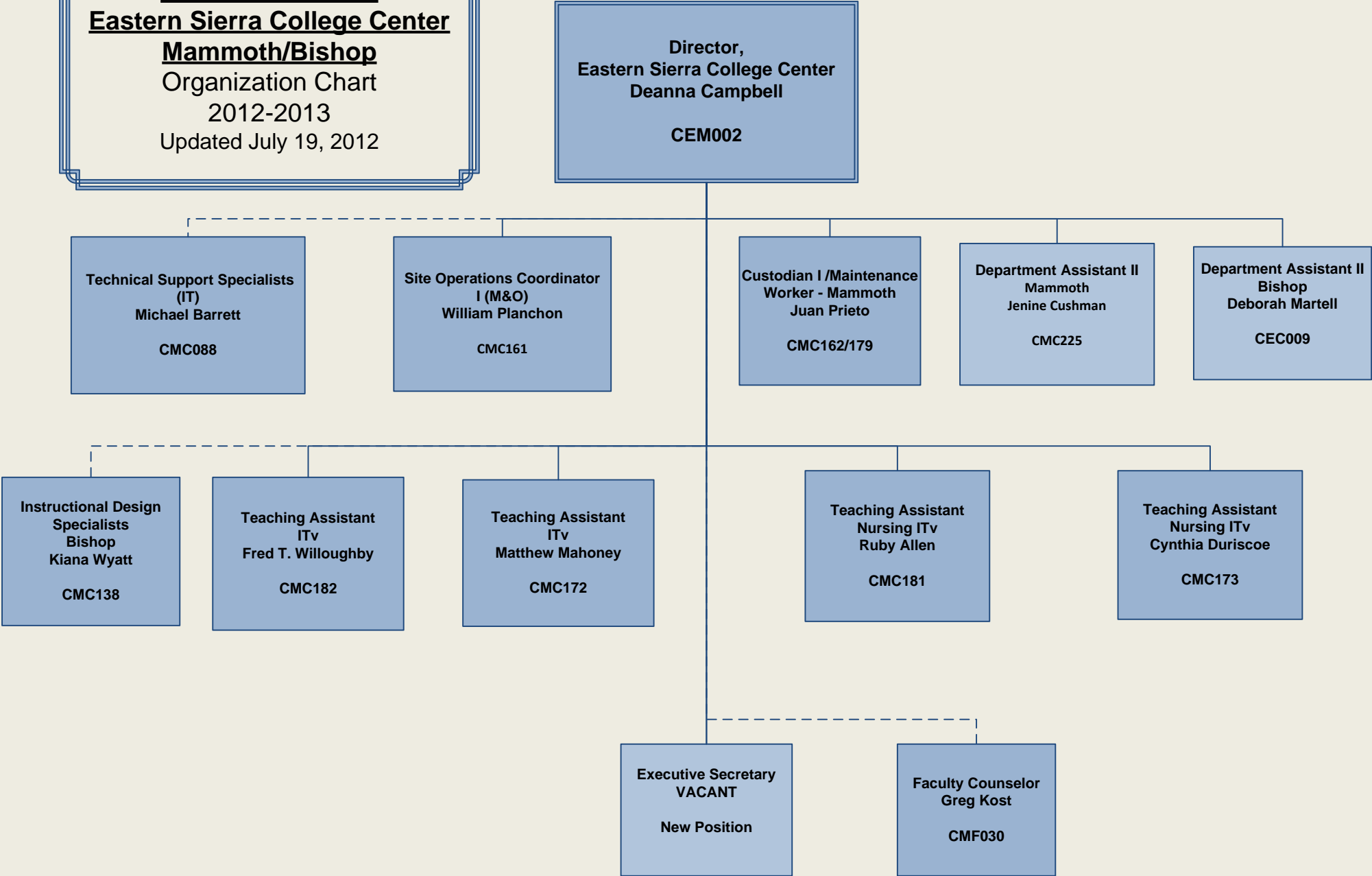
CMC173

Executive Secretary
VACANT

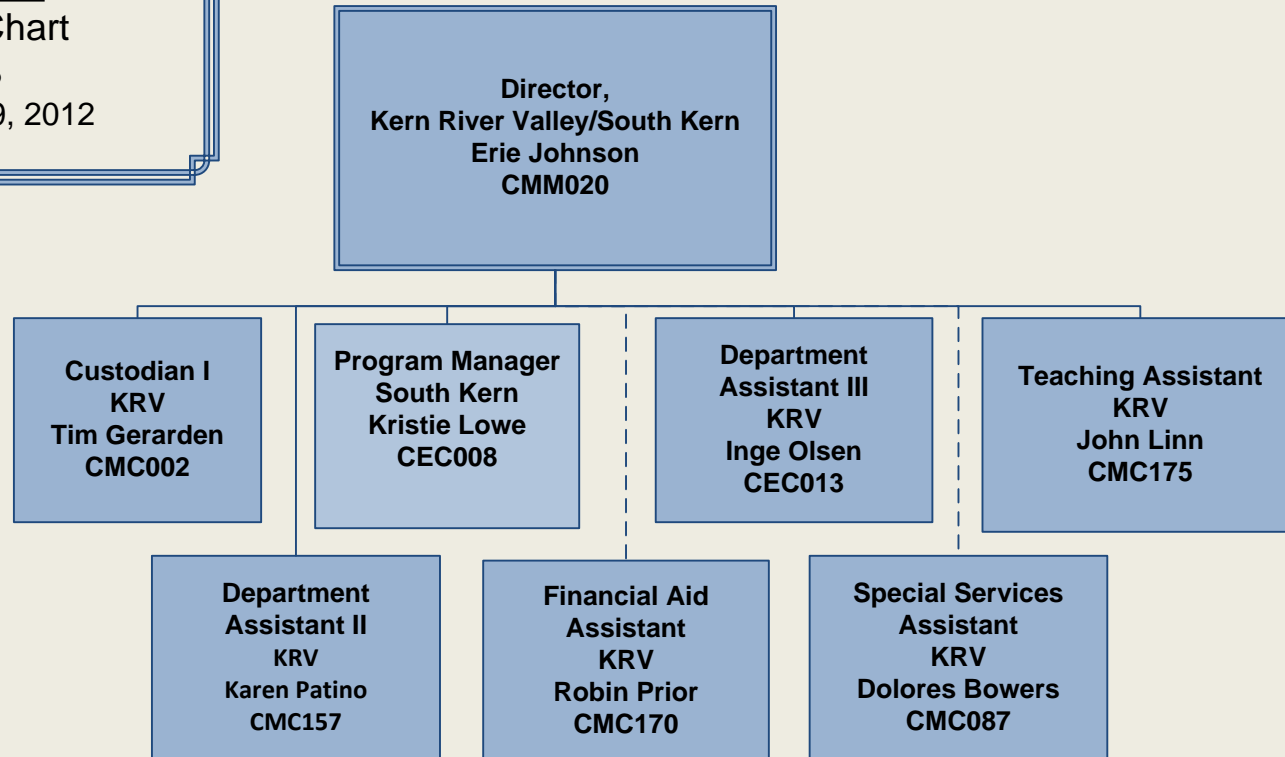
New Position

Faculty Counselor
Greg Kost

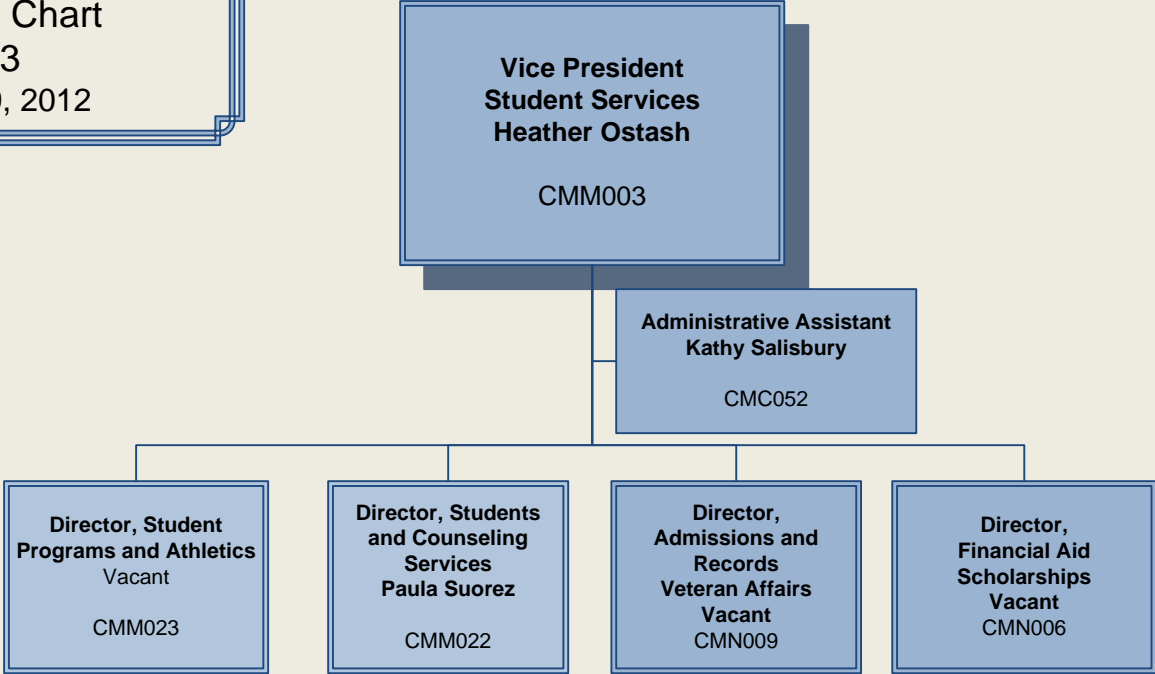
CMF030



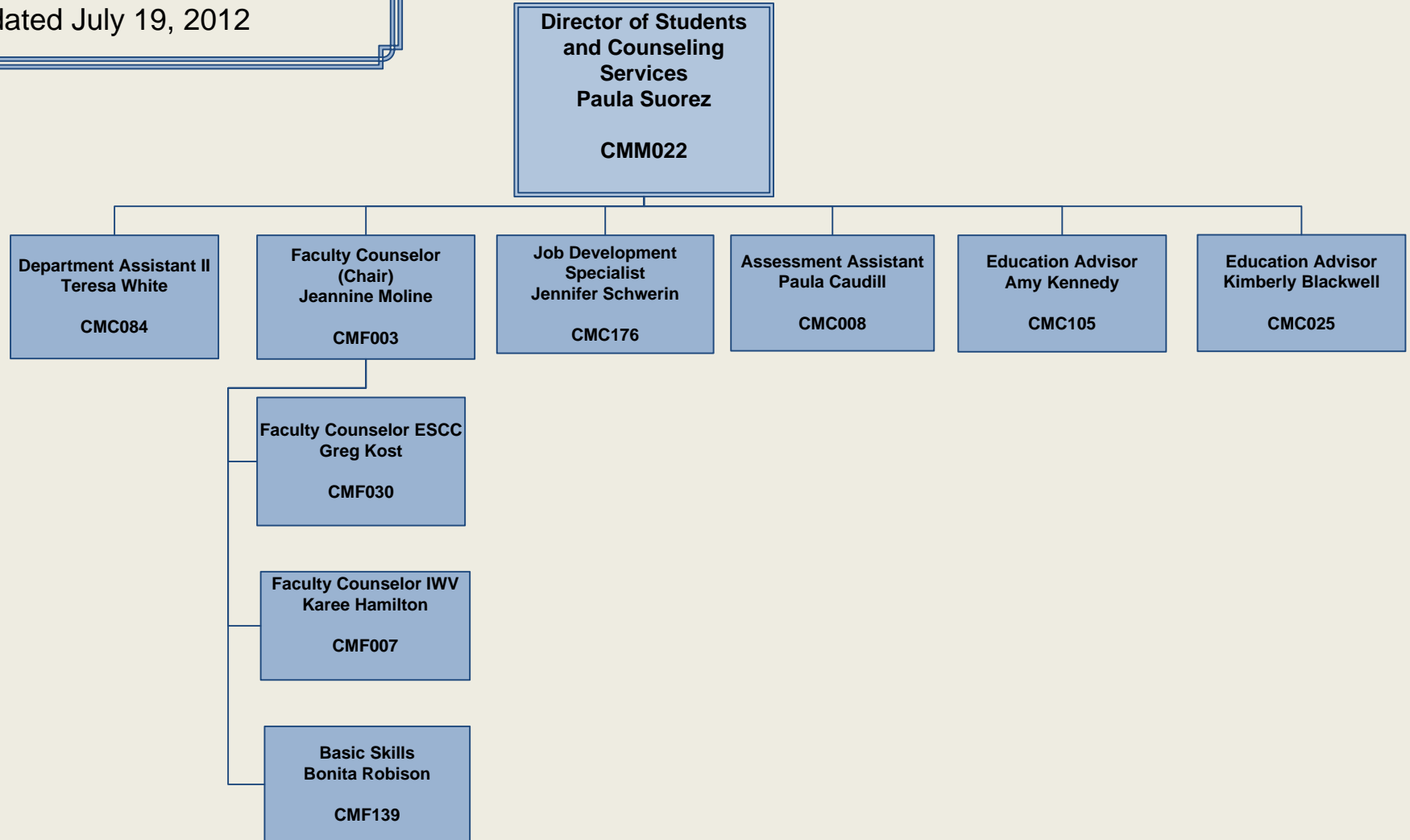
Cerro Coso Community College
Academic Affairs:
Kern River Valley / South Kern
College Center
Organization Chart
2012-2013
Updated on July 19, 2012



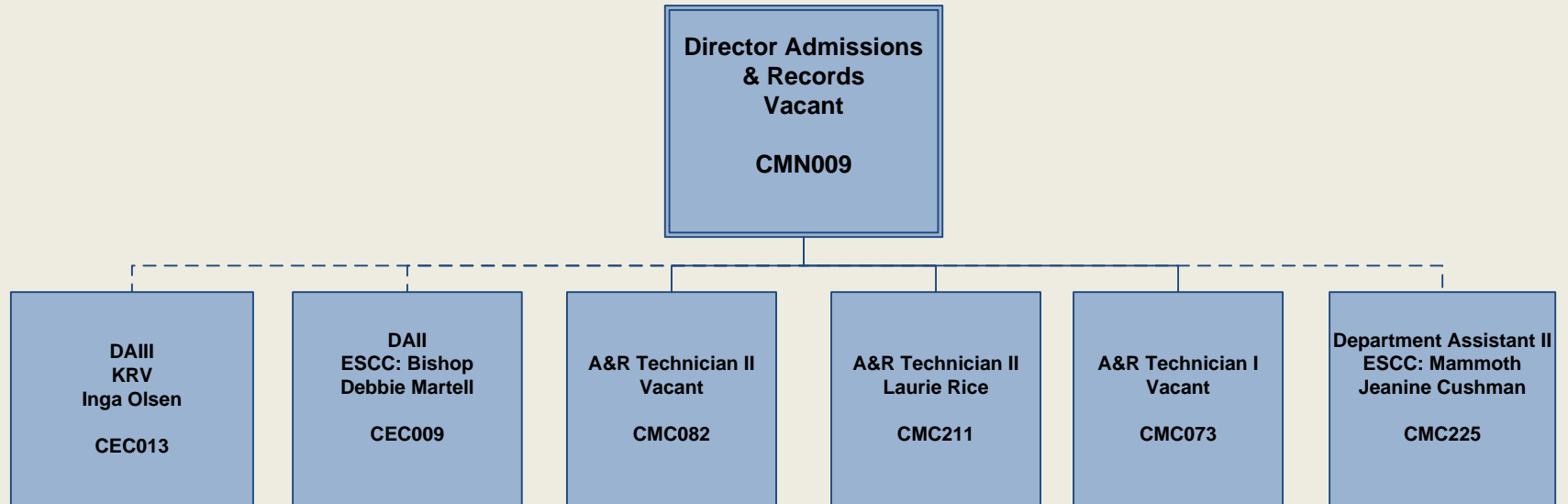
Cerro Coso Community College
Student Services
Organizational Chart
2012-2013
Updated July 19, 2012



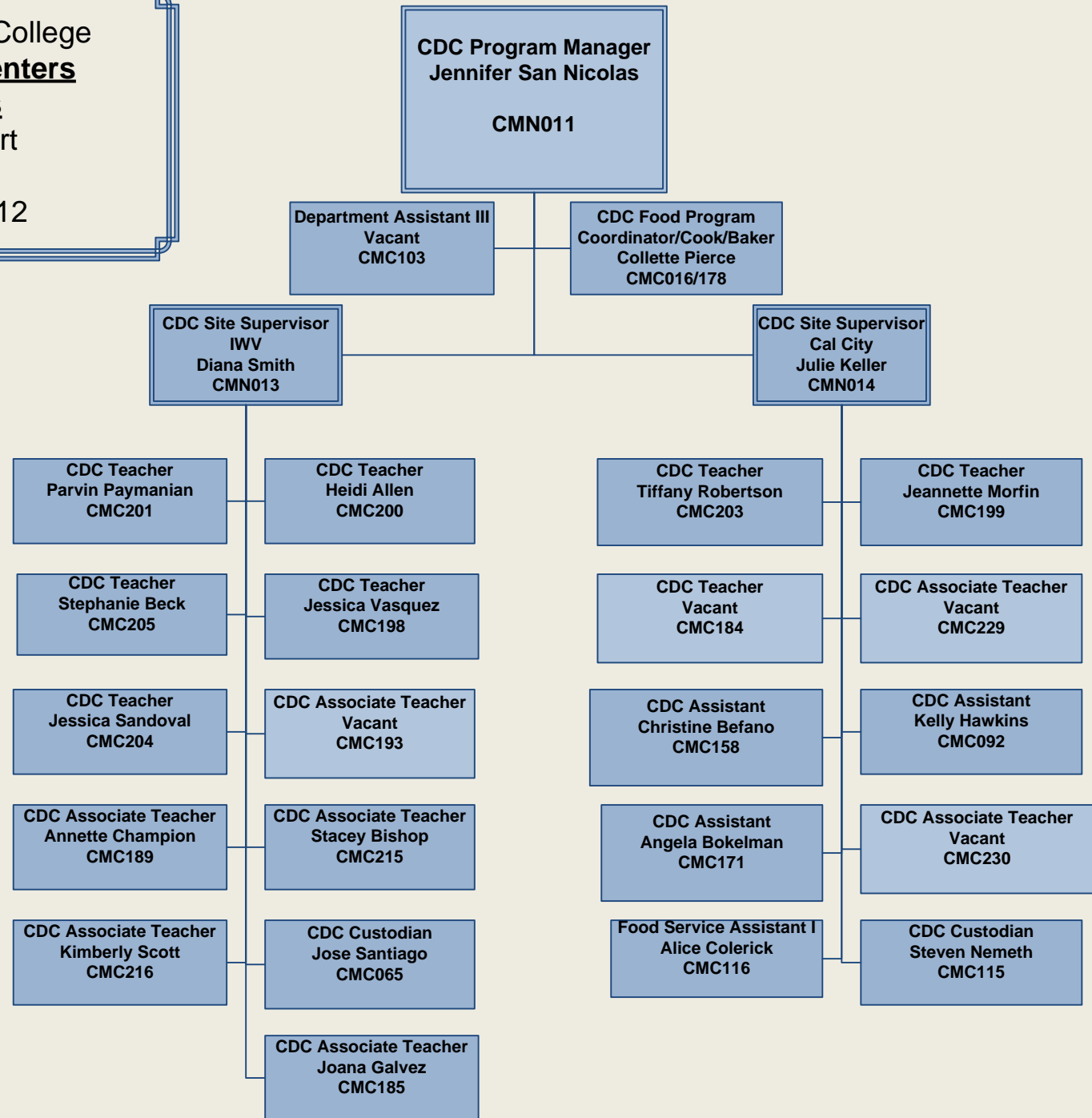
Cerro Coso Community College
Student Services
Student Counseling
Organizational Chart
2012-2013
updated July 19, 2012



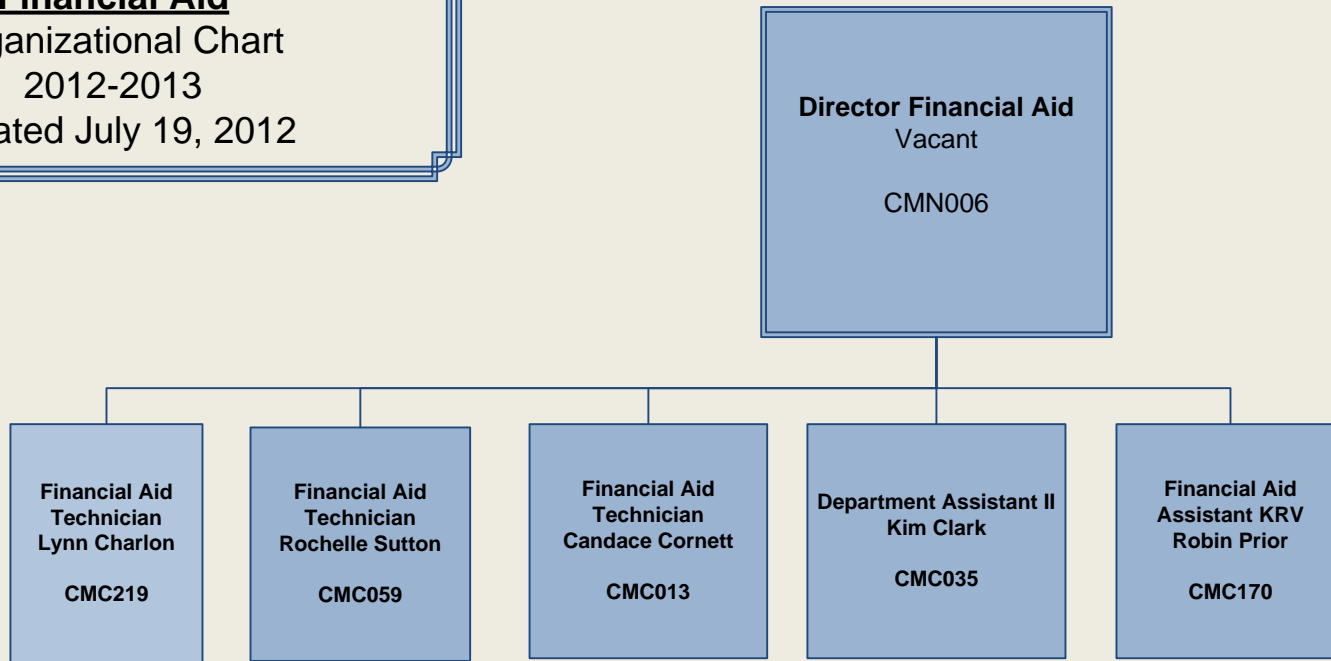
Cerro Coso Community College
Student Services
Admissions & Records
Organizational Chart
2012-2013
Updated July 19, 2012



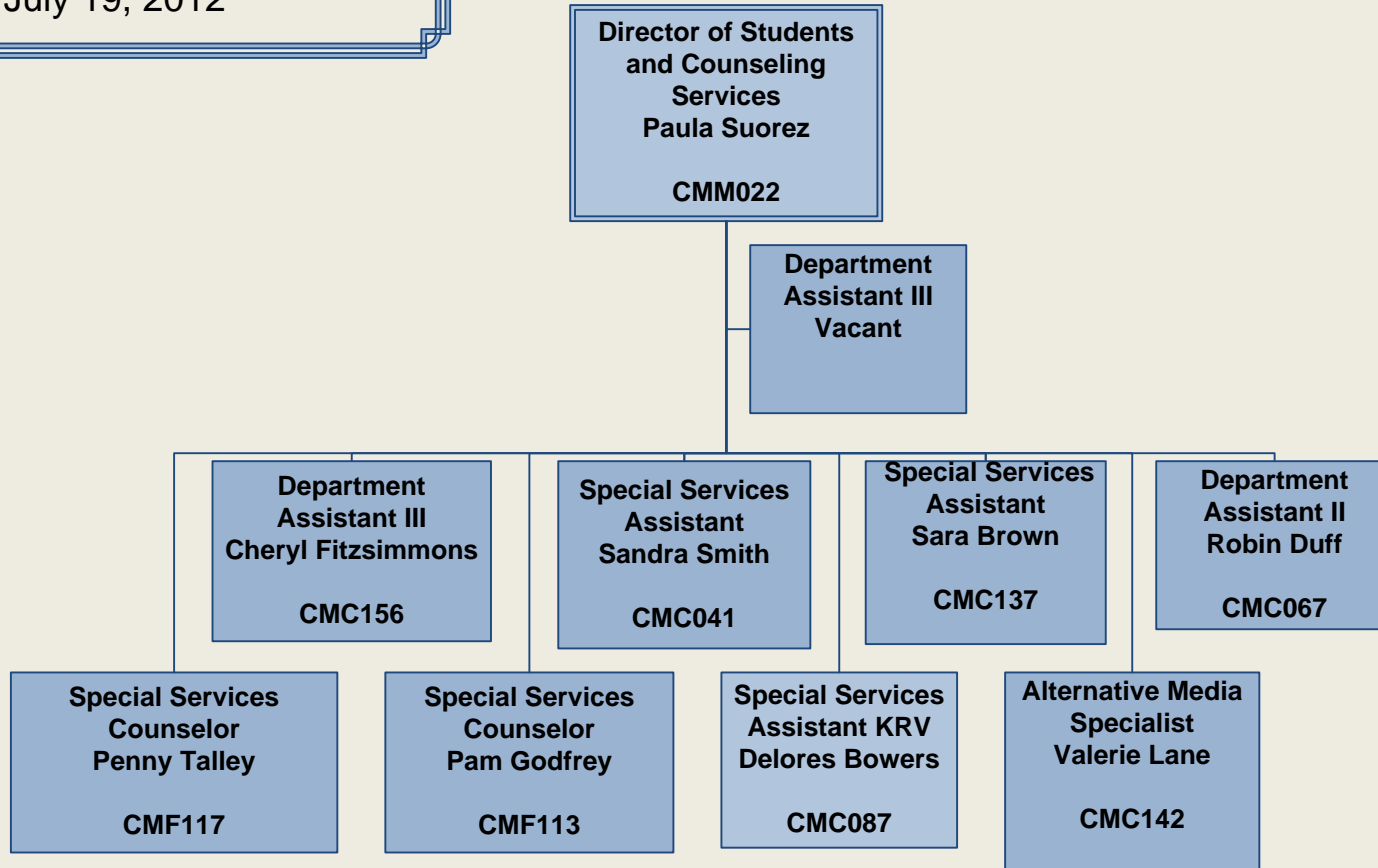
Cerro Coso Community College
Child Development Centers
Student Services
 Organizational Chart
 2012-2013
 updated July 19, 2012



Cerro Coso Community College
Student Services
Financial Aid
Organizational Chart
2012-2013
updated July 19, 2012



Cerro Coso Community College
Student Services
Special Services
Organizational Chart
2012-2013
updated July 19, 2012



Cerro Coso Community College
Student Services
Student Activities & Athletics
Organizational Chart
2012-2013
updated July 19, 2012

